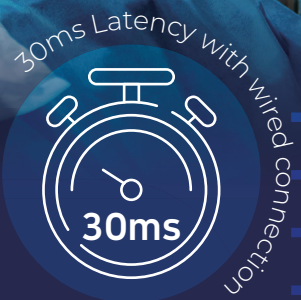


SCOPEYE®



MULTI-MONITOR FUNCTION

Multi Processor

Images of various medical imaging equipment are transmitted to SCOPEYE seamlessly (multi-monitor function)

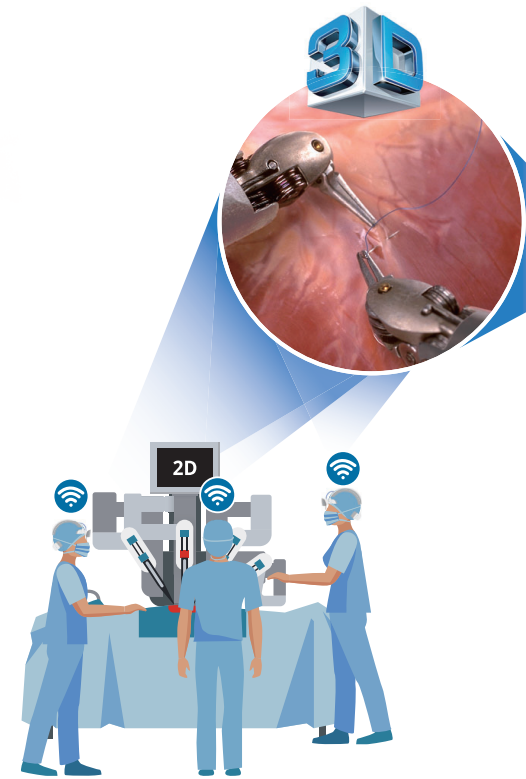


MediThinQ

About SCOPEYE Multi Processor

Processor for revolutionary improvement of the operating room environment.

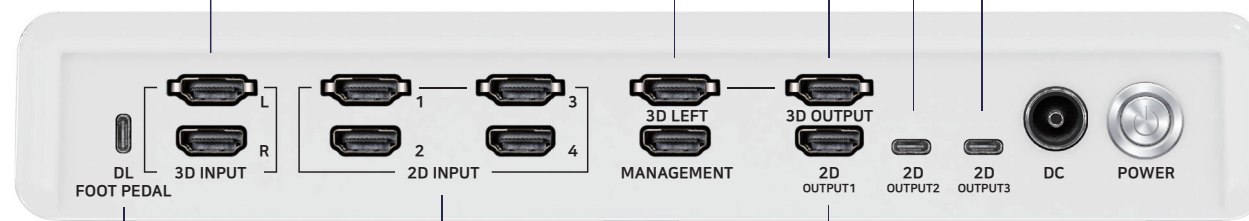
Multi Processor



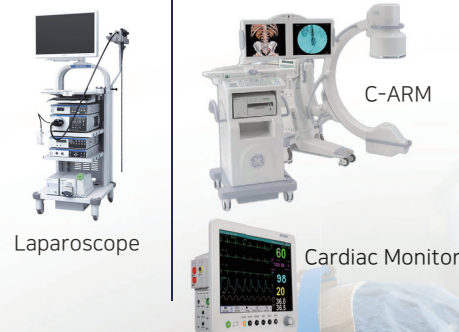
Change the view easily by foot pedal



This is for viewing 3D left and right images on a 2D monitor.



Connect the device or equipment with 2D output.



2D output for 2D monitor connection to view the medical image through the monitor (pass-through)



30ms Latency with wired connection

SCOPEYE®

SCOPEYE is a Medical Eyes Up Display offering unrivalled surgical viewing experience to surgeons by providing a comfortable, lightweight and ergonomically sound experience during the most complicated surgical procedures.

World's Best Wearable Display

- FHD screen like viewing 40inch TV view from 1.5m distance
- Eyes Up Display to secure the external view while viewing the image
- Compatible with 3D medical imaging devices

Band type

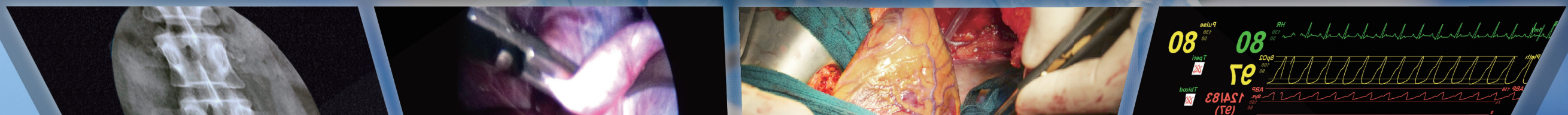


Convenient control using Bluetooth band. (Can be attached anywhere, such as ankles and forearms)

Foot pedal type



Bluetooth Device



Multi Processor



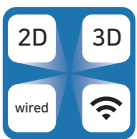
Contributes to optimizing the operating room environment by reducing the need for **multiple monitors hence provide cost-effectiveness**



When connecting the recorder, you can verify the entire **operating room all at once**



Seamlessly transfer multiple videos from **various medical imaging devices** to SCOPEYE



Compatible with both 2D/3D via **wired (Latency of 30ms) or wireless (Latency of 70ms)**



Easy to control with Bluetooth band
(Wearable anywhere such as ankles or wrists)

Specification

Multi Processor		
3D	Video input	3D left(1920x1080) 3D right(1920x1080)
	Video output	side by side(1920x1080) 2D(1920x1080)
2D	Video input	port 1(4K) ~ port 4(4K)
	Output	HDMI x 1(4K), USB type-C x 2(1920x1080) Management(1920x1080)
Connectivity	Wireless	Bluetooth 5.x
	Wired	USB Type-C connector for wired foot pedal (4 pin) Power on/off
Button		Direction key (with touch) Menu/enter (with touch) 2D output port setting (with touch)
LED		RGB, Port status indicator
Power		12V 3.34A dc jack
Dimensions		298.4mm x 196mm x 50mm

Bluetooth Device (Band type)	
Wireless	Bluetooth 5.x
LED	RGB status indicator
Button	Power on/off
	Pairing
IMU sensor	3D accelerometer, 3D gyroscope
Battery	150mAh Li-polymer
Dimensions	346mm x 26.85mm x 13.4mm

